

SC Duplex Adapter – With Flange

 fhk.dhk.cc/adapter-0050/

[Blue](#) [Green](#) [Beige](#) [Magenta](#) [Purple](#)

0050-XXX

Sales Number:	0500-XXX
Manufacturer Number:	K2.SC2021.XXX
Manufacturer:	Fiberhk
Describe:	SC Duplex Adapter - With Flange
Product Drawings:	0050-2XX



Applications

Applications

- Optical fiber communication system
- Optical Security, CATV, FTTx
- Local, Wide and Global Area Networks
- High EMI / RFI environments
- Racks and Panels / Server Rooms
- Test Equipment

[编辑](#)

Features

Features

- Low insertion loss
- Environmentally stable

-
- Good insertion/extraction life
-
- Easy installation
-
- High reliability
-

[编辑](#)

Standards Compliance

Standards Compliance

-
- ☒ ISO/IEC 11801
-
- ☒ ANSI/TIA-568 D.3
-
- ☒ ISO/IEC 24764/ TIA-942
-
- ☒ IEC-60874-14
-
- ☒ IEC 61754-4
-
- ☒ RoHS, REACH SvHC compliant
-

[编辑](#)

Technical and Mechanical Performance

Types:	SC	
Port Path:	Duplex - 2 Fiber	
Flange:	With Flange	
Integrated/Split body	Welding	
Frame Material:	Plastics(PC+ABS)	
Sleeve Material:	ZrO2	
Fragment Size:	1.8~2.0/Panel thickness 1.6mm	Support personalized customization
Dust Cap Style:	0600~0604	See accessory style for details
Colour:	Blue/Green/Turquoise/Beige	Support personalized customization
Magnitude:	≥ 500	

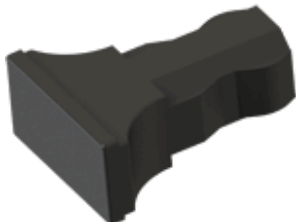
Technical and Mechanical Performance

Ambient temp. (operation)	-40°C ~ +80°C
Ambient temp. (storage)	-40°C ~ +85°C
Insertion Loss (dB) :	Typical ≤ 0.15dB, max ≤ 0.20dB
Repeatability :	≤ 0.10dB
Interchangeability :	≤ 0.20dB
Allowable engagement force:	<19.6N
Tensile strength Of coupling:	mechanism: 68.6N

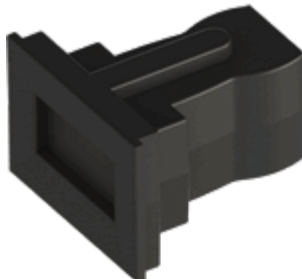
Ordering Information

Product Name	MFR No	Sales No	Shuttering	Material	Colour	Dust Cap Style	Dust cap color
SC Duplex Adapter - With Flange	K2.SC2021	0050	Unshuttered	02 PBT 11 PC/ABS	01 Blue 02 Green 03 Turquoise 04 Beige 16 Magenta 17 Lime Green	FS01:Gourd Style FS03:T-shaped Style FS04:Locking Style FS05:"R" logo Style FS06: Regular Style	Follow the main color Or custom colors

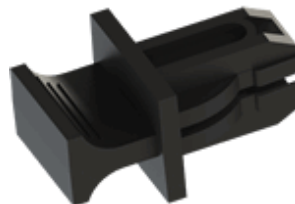
FS01-Gourd Style



FS03-T-Shaped Style



FS04-Locking Style



FS06-Regular Style



FS01-Gourd Style



FS03-T-Shaped Style



FS04-Locking Style



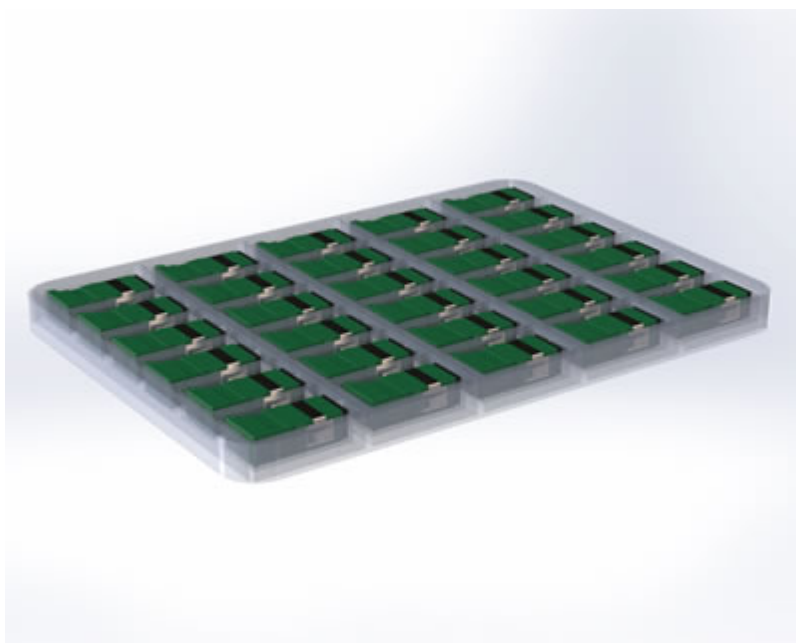
FS06-Regular Style



The usual color is black, but it can also follow the main color

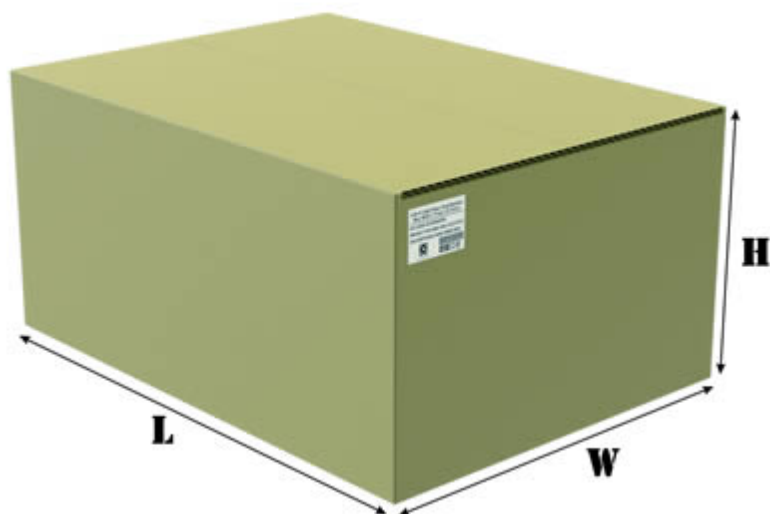
Tip Product color supports customization, only the PANGTONGE/RAL number needs to be provided

Packaging Method



INNER PACKING
BLISTER BOX
MPQ: 30

Packaging Method



OUTER PACKING
CTN: CORRUGATED CARTON
QTY: 6000 PCS
N.W: 10Kg
G.W: 15Kg
MEAS: L57*W42*M28CM

[数据文件](#)

[全球产品变更通知书\(PDF\)](#)

[0050-2XX数据表\(PDF\)](#)

[环境文件](#)

[PRODUCT COMPLIANCE STATEMENT](#)

[CONFLICT MINERALS POLICY](#)

[产品合规性](#)

CNHTS: 8538900000

CAHTS: 8536700000

ECCN: EAR99

[FAQ](#)

Q: Do you support customization??

A: Definitely yes, customization is available according to your product requirements.

Q: What is the best price you can offer?

A: The unit price will vary according to the material you want and the quantity you order.

Q: How long will it take to ship to my country?

A: Generally it will take 3 to 7 days after receiving your advance payment. The specific delivery time depends on the items and the quantity of your order.

Q: Can I get a sample first?

A: We do offer samples before making any production so that the production is up to the buyer's expectation. Samples can be delivered within 5-8 days.

Q: Can I add my own logo?

A: Yes, OEM and ODM is available.

Q: How do you guarantee quality?

A: We have a good quality control team, Raw material is tested before production and there is strict supervision during the production process. We will test the products after they are finished. Before the final packaging we will test them one by one again.

Q: Do you offer a guarantee for the products?

A: Yes, we offer a 1-2 years warranty on our formal products.

Send us your message